

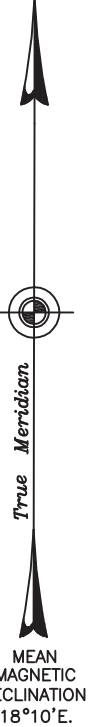
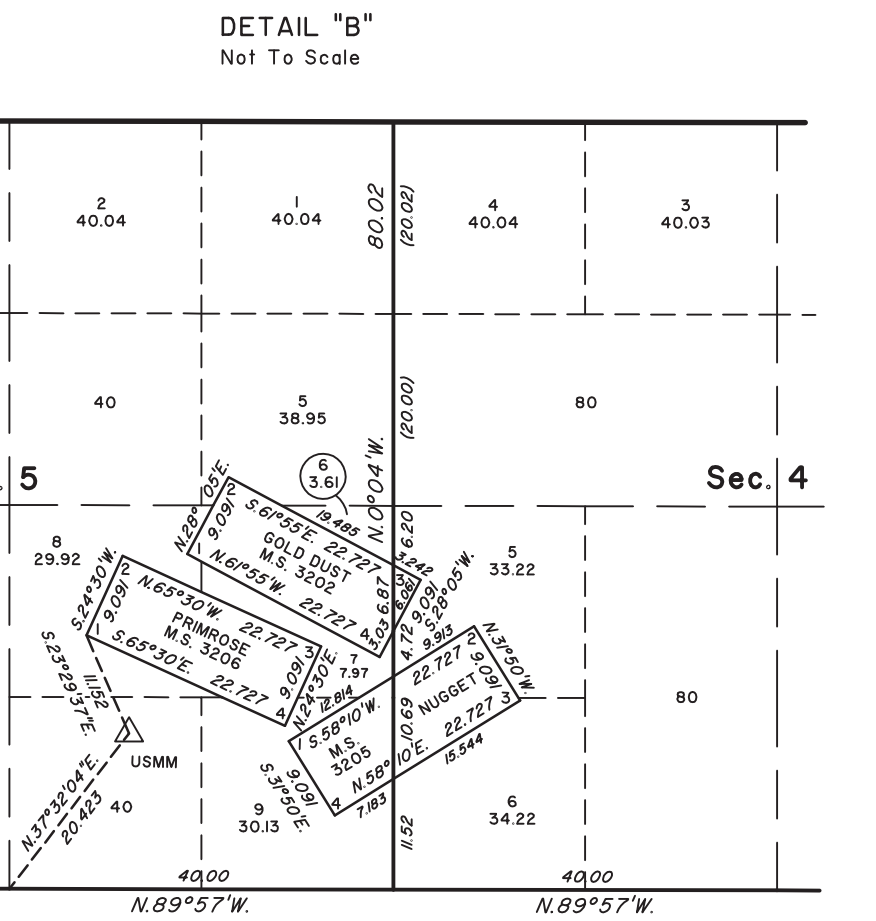
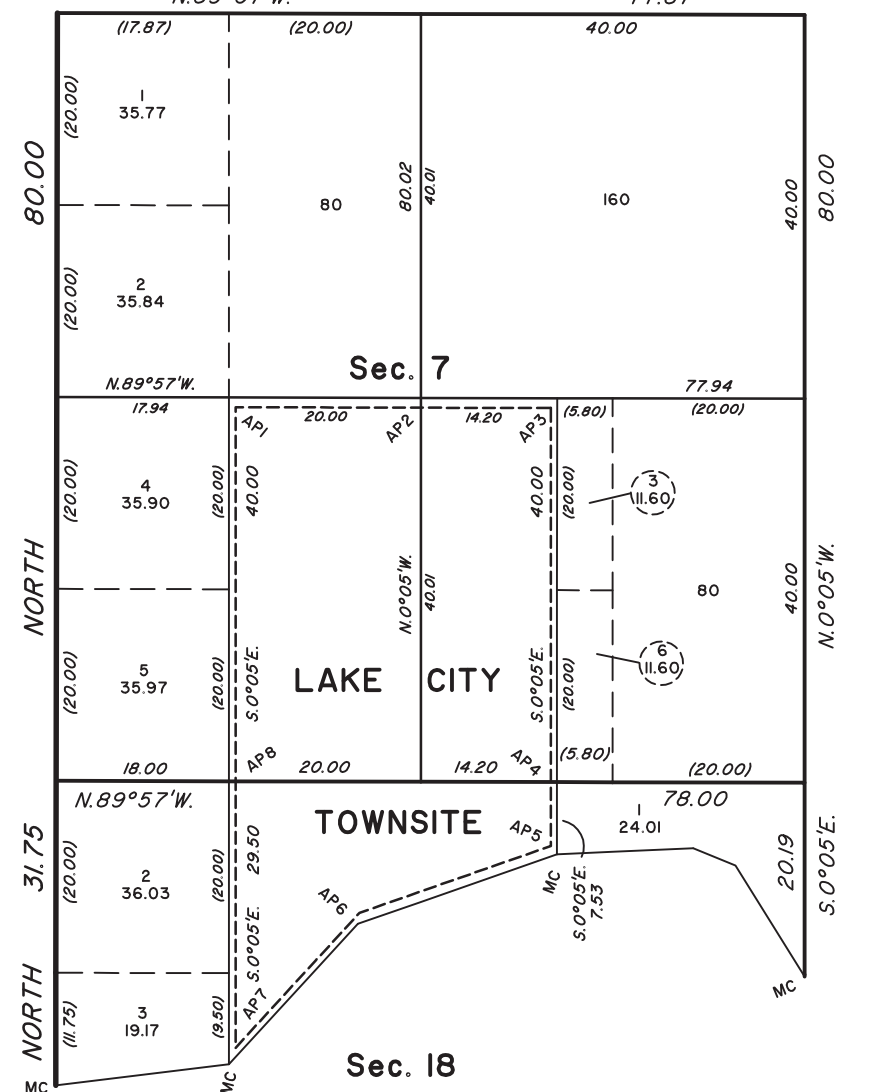
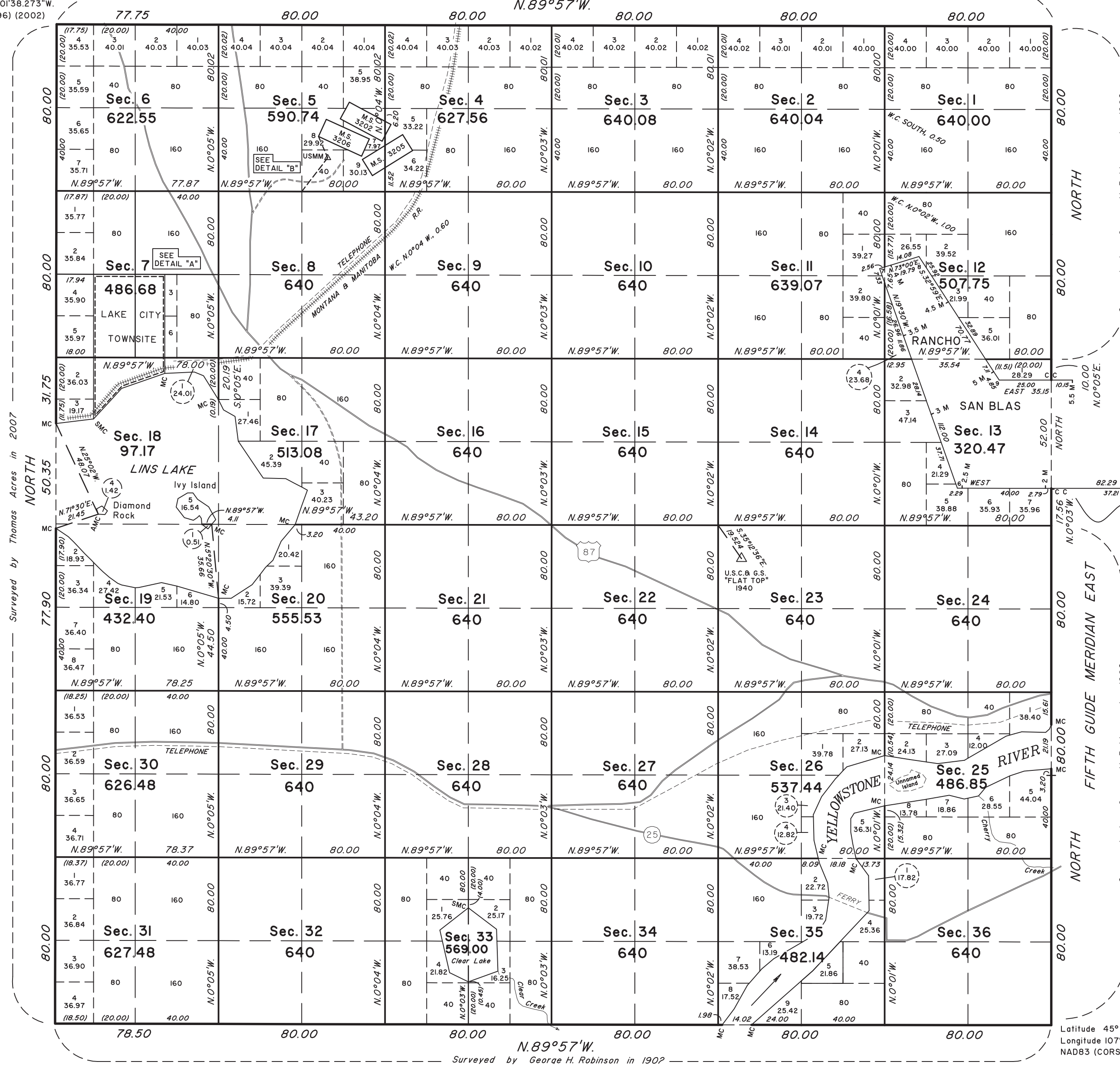
TOWNSHIP 15 NORTH, RANGE 20 EAST, OF THE PRINCIPAL MERIDIAN, MONTANA

ORIGINAL SURVEY, DEPENDENT RESURVEY, SUBDIVISION OF SECTIONS, AND TOWNSITE SURVEY

Latitude 45°50'15.065"N.
Longitude 108°01'38.273"W.
NAD83 (CORS96) (2002)

Surveyed by Thomas Acres in 2007

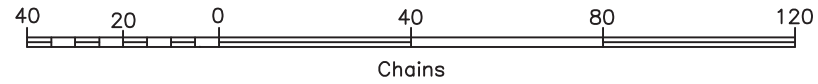
DETAIL "A"
Not To Scale



The history of surveys is contained in the field notes.

This plat represents the dependent resurvey of a portion of Rancho San Blas, Mineral Surveys No. 3202, 3205, and 3206, and a portion of the east boundary, and survey of the subdivisional and meander lines, subdivision of sections 7, 18, and 33, and Lake City Townsite of Township 15 North, Range 20 East, Principal Meridian, Montana, executed by Robert Acres, Cadastral Surveyor, beginning June 1, 2009 and completed June 30, 2009, under Special Instructions dated April 1, 2009, for Group No. 1234, Montana.

Area surveyed: 20,882.51 acres



Latitude 45°45'02.458"N.
Longitude 107°54'13.367"W.
NAD83 (CORS96) (2002)

UNITED STATES DEPARTMENT OF THE INTERIOR
BUREAU OF LAND MANAGEMENT
Billings, Montana September 15, 2009

This plat is strictly conformable to the approved field notes, and the survey, having been correctly executed in accordance with the requirements of the law and the regulations of this Bureau, is hereby accepted.

For the Director
Chief Cadastral Surveyor for Montana