

Lost township corner in vicinity of **X**.

A, B, C, D—Control corners.

E—Proportionate point for **X** in latitude between **A** and **B**.

F—Proportionate point for **X** in departure between **C** and **D**.

The correct position of **X** is at the intersection of lines extended east or west from **E** and north or south from **F**.

Restored corner showing true direction of township lines.

Figure 7-1. The plan of double proportionate measurement.

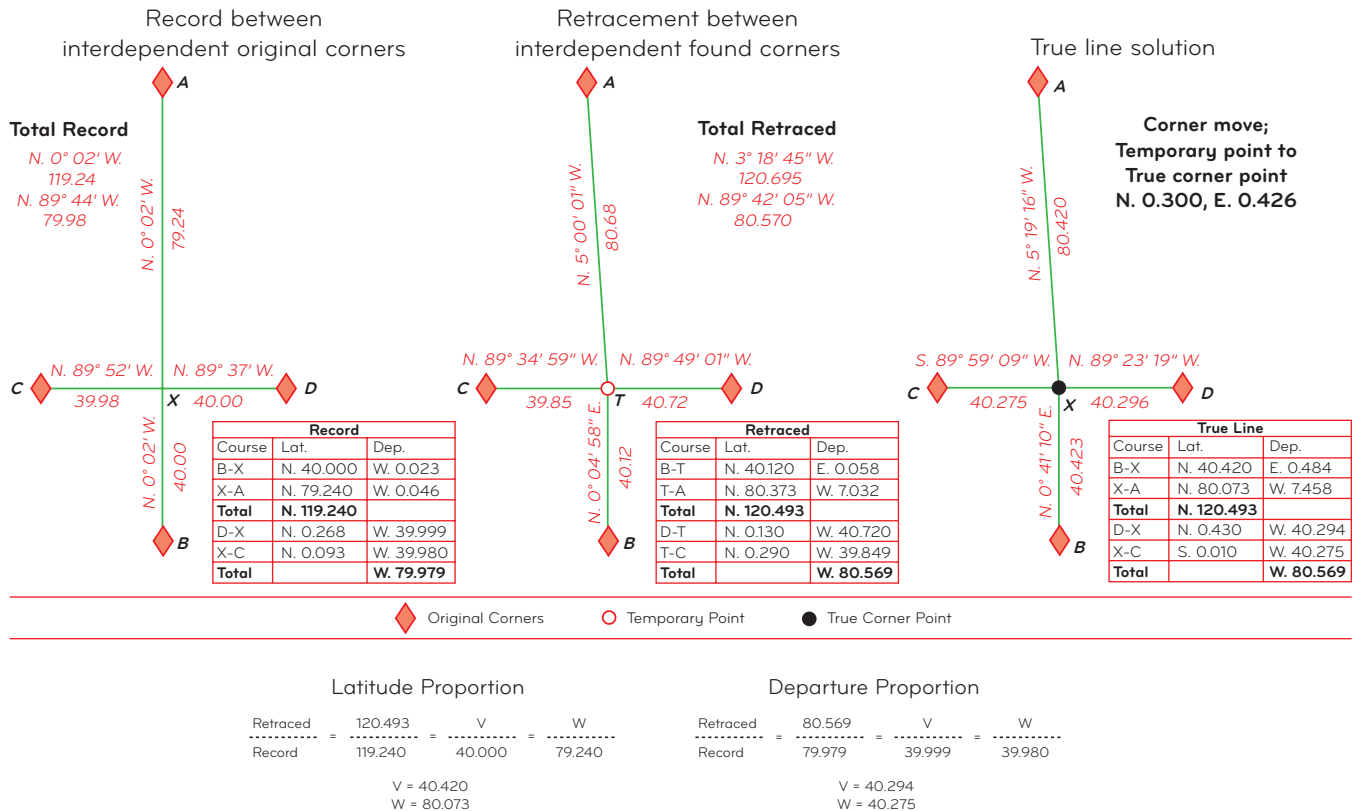


Figure 7-2. Double proportionate measurement and cardinal equivalents.